

Onspring

Compliance Management

Intelligent Automation and Connected Data Platform



Why choose Onspring for Compliance Management?

When you consolidate and automate compliance activities, you simply get better control & visibility. Rather than relying on manual spreadsheets and SharePoint, our compliance solution manages end-to-end compliance tracking and reporting efforts on any number of regulations or standards, like SOX, ISO, HITRUST, PCI and CMMC, by linking your control sets or frameworks to the rest of your business processes.

By implementing Onspring's compliance management solution, you can conduct faster and more accurate testing to evaluate controls, manage issues and demonstrate your effectiveness. Plus, you can implement and customize in perpetuity—on your own—without needing IT dev resources.

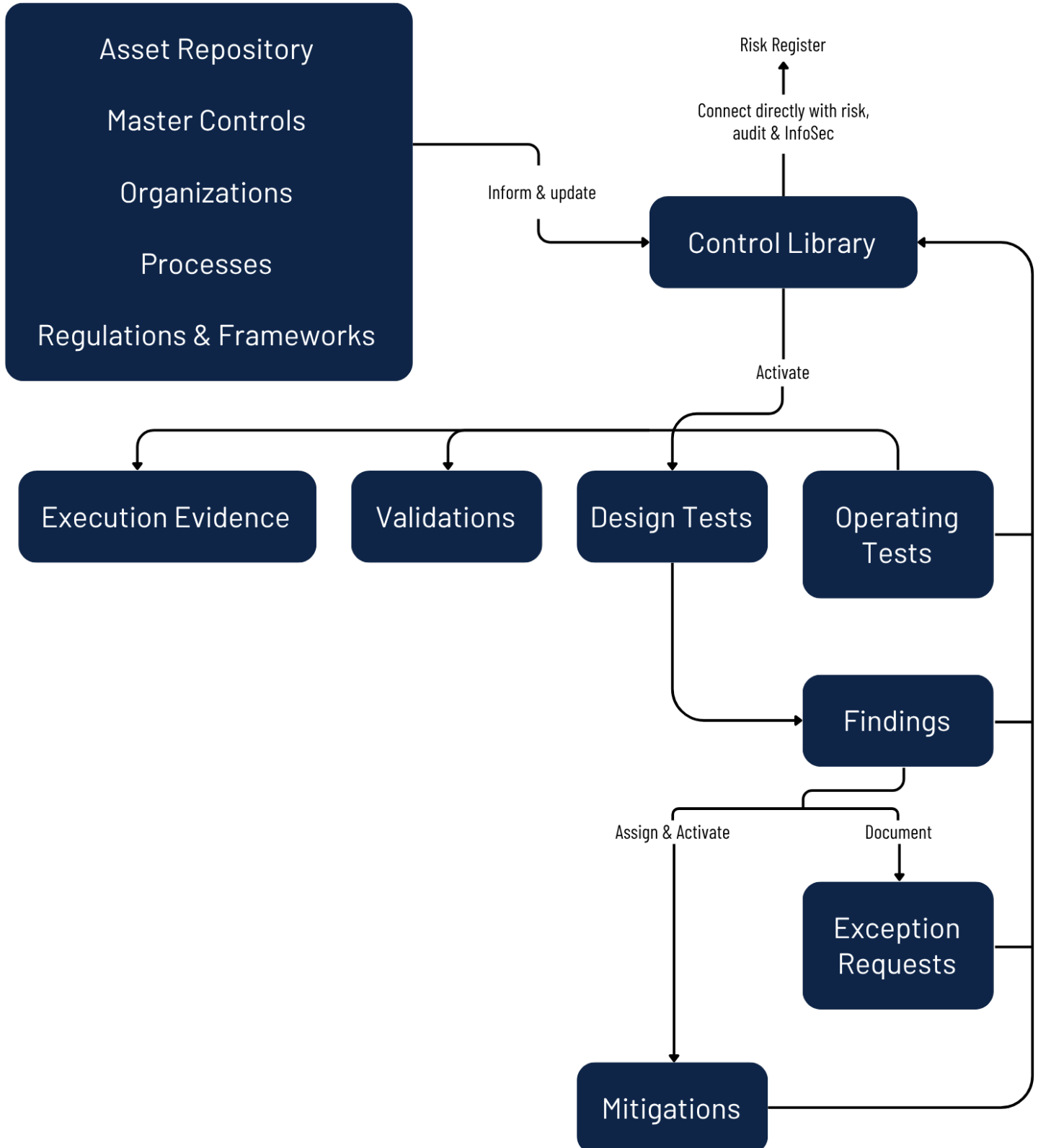


Our compliance solution provides a centralized, digital control library that tracks and maps all your controls to standards, regulations, and laws - including GDPR, PCI, ISO, and NERC.



Real-time visibility into compliance controls to identify control gaps and measure effectiveness of mitigation plans.

One Connected System for All Requirements



Key Benefits for Compliance Management

Onspring manages your tracking and automates control testing, workflows, approvals and analytics, which allows you to share real-time compliance monitoring on issues, remediation tasks and any certifications required.

- ✦ A streamlined control library that maps to all regulations, standards & frameworks and relates to risks & policies.
- ✦ Multi-level, dynamic review and approval workflows for design and operating tests, gap assessments, exceptions, and mitigation plans.
- ✦ Integration with regulatory content providers in one accessible, automatically updated system.
- ✦ One-click, formatted compliance reports to executives or stakeholders.

The Onspring Difference

- ⚡ Omni-data Connectivity
- ⚡ Made to Scale Up and Out
- ⚡ No-code, Self-sustaining Administration

An Adaptive, Integrated GRC Platform

Onspring was built to connect processes, data and teams across the enterprise. With real-time visibility into risk posture, security controls and accountability measures, Onspring gives organizations a complete view of their governance, risk and compliance landscape. The platform is fully configurable, allowing users to create automations, unify workflows and scale their programs.



Platform Features



Live reporting

Real-time data aggregation in tables, graphs and maps that that drill directly to details



Executive dashboards

Deliver insights and communicate activities in a role-based command center



Data references

Relate data points to impacted policies, controls, requirements, regulations and frameworks



Formulas

Calculate values from multiple data records and APIs to measure real-time status or risk posture



Surveys

Send assessments, attestations and surveys on an automatic schedule or ad hoc



Access control

Set permissions by user to create, read-only, edit and delete



Task management

Assign individual tasks and track completion by team member, due date, budget and priority



Integrations

Consolidate third-party monitoring services and your favorite tech



Ready-made

Start immediately with out-of-the-box workflows and reports; just add your data



Make it your own

Edit and create new workflows and reports on your own without IT or dev resources



End-to-end management

Unify all angles of your GRC ecosystem to fully assess, prioritize, manage and monitor ever-evolving risks and compliance.



Connected

Connect with any team or any technology in your enterprise.

Real ROI



increase in employee efficiencies



reduction in redundant tasks



wait to update workflows and reports

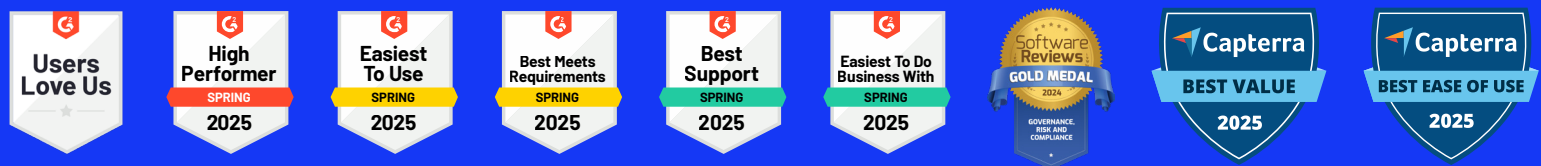
Onspring Customer Success

"Onspring has been a key resource for our organization for SOX compliance, Supplier Risk Management, ISO 27001/2 compliance and certification and certification with executive-level reporting. The Onspring team has been exceptionally supportive since implementation, never failing to deliver a promise on a deadline whenever called upon."

- COMMScope, Inc.

"Onspring was a compliance gamechanger. We could put everything in one place and rationalize this control meets the requirements of clients A, B and C. It also meets our ISO 27001 requirement and is included in our SSAE 16 report. Onspring gives us a place where we can test once but report in several different ways."

- BENEVITY



Onspring is transforming the way enterprises automate their business processes to stay ahead of risk.

Onspring is a connected, adaptive GRC platform designed to unify processes, data and teams across the enterprise. Achieve comprehensive, real-time visibility into your risk posture, security controls and compliance status, transforming scattered information into actionable intelligence.

Trusted by organizations across diverse industries, Onspring modernizes GRC, moving beyond fragmented, reactive approaches to integrated, proactive oversight.



onspring.com